

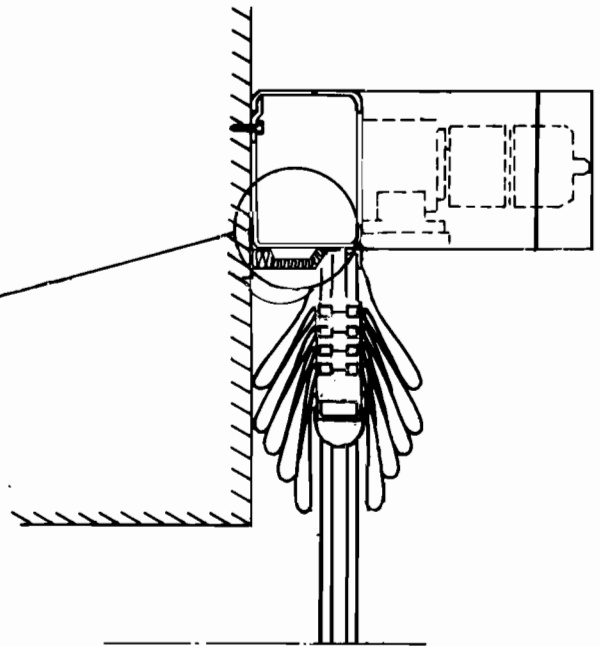
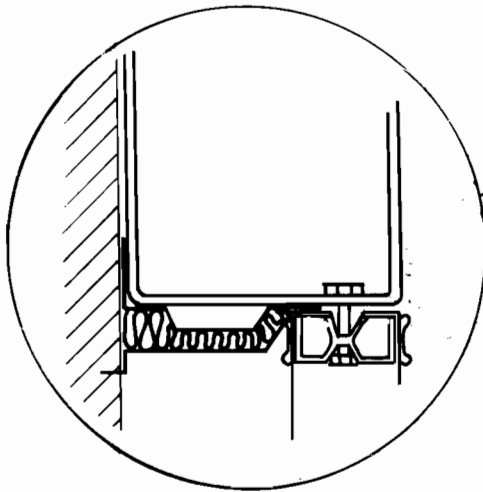
MEGADOOR SYSTEM 800 EXTRA CORROSION RESISTANT VERSION

Megadoor has its origins in the extremely corrosive atmosphere of wood drying kilns. Megadoor's resistance to corrosion was developed as a result of the severe conditions in the kilns, i.e. 100% relative humidity, acidic precipitation, powerful circulation of air

and an ambient temperature of (50°C). In addition to the standard System 800 door, which features high resistance to corrosion, the System 800 is also available in an extra corrosion resistant version.

APPLICATIONS IN EXTREMELY CORROSIVE ENVIRONMENTS

The machine box should be isolated from the corrosive atmosphere. This is best accomplished by locating the machine box outside the building.



The machine box should be thoroughly sealed against the wall to prevent corrosive air from entering the machine box.

The sheet casing, shown in the illustration, is not included in our delivery. However, suggestions and instructions for suitable solutions are available from Megadoor.

The motor should be protected at the bottom, since vapour will rise and cause condensation of moisture around the machine box when the door is opened in cold weather.

A protective casing over the motor is available as optional equipment.
(See page 13).

LOCATION OF THE CONTROL CABINET

Casing of the control cabinet complies with safety classification IP 54. This implies that the cabinet may be located in severe corrosive environments. However, since the cabinet will have to be opened occasionally, e.g. to replace a fuse, and may thus allow moisture to enter, it is advisable to locate the cabinet away from

any corrosive atmosphere. The cabinet should not be placed immediately adjacent to the door, if there is a risk of severe condensation when the door is opened. In such cases it is more suitable to place the control device close to the door and the control cabinet in a well protected location.